



SOLUTION BRIEF

COMMVAULT 

# Know Your Data to Better Protect It from Ransomware

Find, secure, and understand your data to minimize risk

When it comes to data protection and management, what you don't know can hurt you and your business. Most likely, some of your critical and sensitive data still lives in the data center – the rest is spread across hybrid, multi-cloud, endpoint, SaaS, remote, and distributed environments. And with many employees working both at home and in the office, your critical and sensitive data is further dispersed. This high-risk game of data hide-and-seek expands your attack surface, elevating your risk of ransomware attacks, data breaches, and data exfiltration.

The average cost  
of a data breach is  
expected to reach

**\$5M** this year.<sup>1</sup>

To properly secure, defend, and recover your dispersed data from these threats, you need to answer this not-so-simple question: **Do you know where all your critical data resides?**

## IDENTIFY, SECURE, AND PROTECT YOUR SENSITIVE AND CRITICAL DATA

Complete end-to-end observability across all these diverse data locations is essential to any data protection or cybersecurity strategy. You need to know what data is where, who has access to it, and if it resides in a location you can protect. Complete data observability across traditional on-premises, hybrid, multi-cloud, edge, and SaaS locations lets you see where your sensitive and critical data resides and enables you to deploy proactive security measures. Detailed visibility and data awareness are central to verifying and enforcing least-privilege access policies, reducing the risks of data leakage, and supporting governance and compliance initiatives related to handling personally identifiable information (PII).

Furthermore, analytical insights derived from data insights are critical for incident assessment and response. For example, knowing which data sets have been affected by a ransomware incident helps you prioritize recovery and determine the potential scope of exfiltration by allowing you to quickly audit impacted assets. Do the criminals have anything of value, or are they bluffing to extort payment? With the right analytics in place, you'll know.



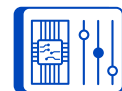
Define what is  
sensitive data.



Identify and remediate  
sensitive data from live and  
backup data sources.



Formalize access and deletion  
request processes (right to  
access/right to be forgotten).



Collaborate, review, and approve  
remediation actions and  
requests.

## COMMVAULT RISK ANALYSIS – LOWER RANSOMWARE RISKS

Commvault® Risk Analysis helps ensure that sensitive data is secure, constantly monitored, and thoroughly understood – helping to limit data exposure, reduce exfiltration risks, and ensure backups are safe and usable when facing cyber incidents. Plus, because it streamlines backups by identifying redundant, obsolete, and trivial (ROT) data for removal from production systems, Commvault Risk Analysis enables faster recoveries.

Adding Commvault® Risk Analysis to Commvault Complete™ Data Protection gives you simple, scalable, comprehensive backup, replication, and disaster recovery orchestration for all modern workloads.

- Safeguard and manage sensitive data (and its permissions) to help ensure compliance.
- Respond to security events faster – before data encryption, leakage, or exfiltration.
- Identify and remove ROT data to reduce costs and accelerate recovery time.

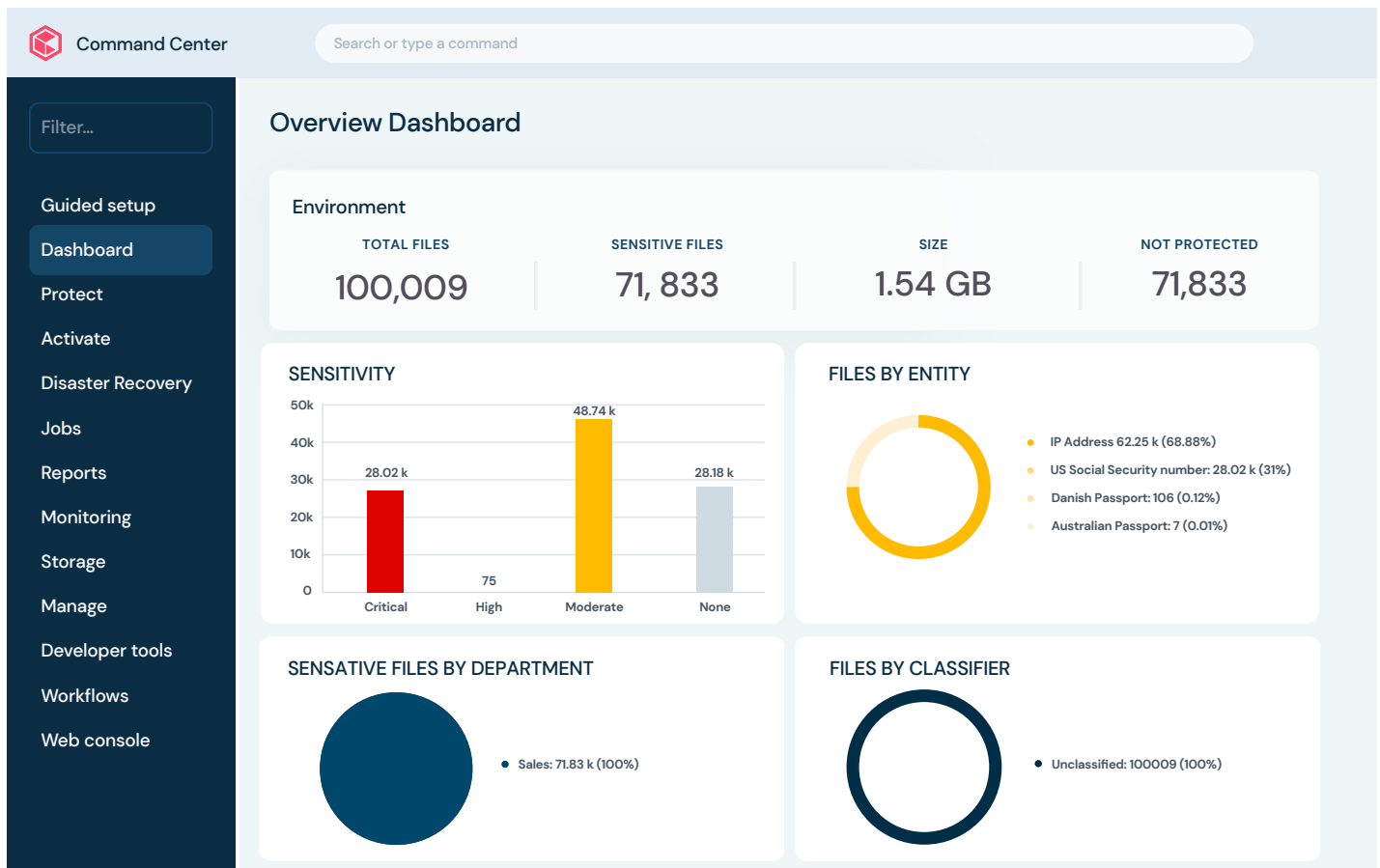


Figure 1 (Image for illustrative purposes) – Commvault Command Center™ is a single dashboard to protect and manage all your data – regardless of where it resides.

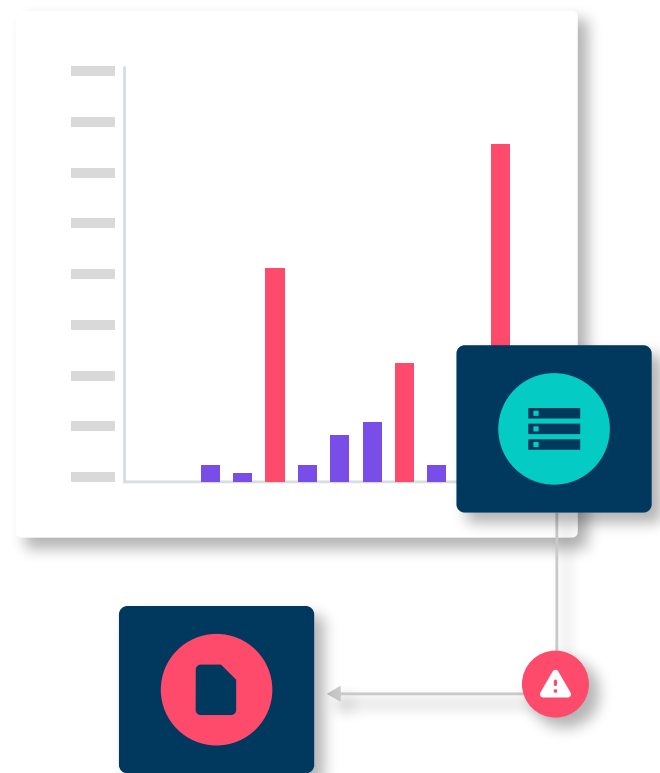
## COMMVAULT THREAT SCAN – KEEP BACKUP DATA CLEAN

Without proper visibility, malware and other threats could be lurking in backup copies. Identifying infected backup content can be a manual and time-consuming process, introducing user oversight and increasing recovery times and reinfection risks. Know that your backup data is clean and recoverable with [Commvault® Threat Scan](#).

Defend your backup data by proactively identifying malware threats to help avoid reinfection during recovery. Threat Scan analyzes backup data to find and remove encrypted and corrupted files, ensuring that you recover trusted versions of your data quickly.

- Scan backup content for malware and nefarious changes
- Automatically quarantine and isolate infected datasets
- Rapidly restore data to clean states without reinfection risk

Enhance your backup data protection platform by adding [Commvault Complete™ Data Protection](#) with Commvault® Threat Scan to ensure easy, scalable, and comprehensive backup, replication, and disaster recovery orchestration for all your data no matter where it is located.



## THREATWISE™ – DETECT THREATS BEFORE DATA IS COMPROMISED

Strengthen your security posture with sophisticated early-warning capabilities and cyber threat detection. With [ThreatWise™](#) you can surface and minimize advanced attacks sooner - before your data is compromised.

Using patented cyber deception technology, ThreatWise™ uncovers silent threats and bad actors who bypass conventional security tools so that you can respond before data encryption, exfiltration, or damage.

- Deploy fake assets to hide legitimate resources and backup environments.
- Identify zero-day and unknown threats in your production environment before they reach your data.
- Seamlessly alert IT and security teams without false positives.

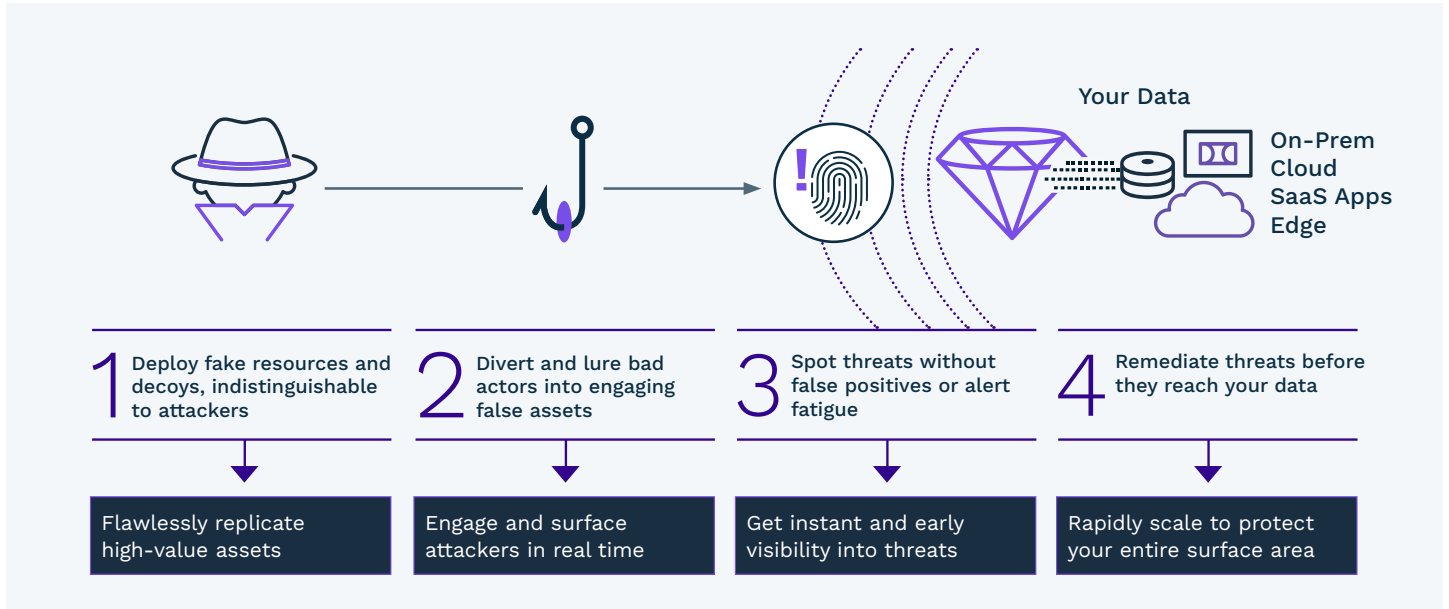


Figure 2 – ThreatWise™ tricks bad actors into engaging with fake assets, alerting you to network infiltration and distracting cybercriminals while you contain and remediate threats.

Data security and protection are essential to protect critical and sensitive data from ransomware attacks, data breaches, and data exfiltration. Commvault® Risk Analysis, Commvault® Threat Scan and ThreatWise™ provide the insight and protection needed to keep data secure and safe, while also helping to reduce costs and accelerate recovery time. With the right tools and solutions, you can be sure that your data is secure and protected.

Learn more about [Commvault Risk Analysis](#), [Commvault® Threat Scan](#), [Commvault Complete™ Data Protection](#), and [ThreatWise™](#)